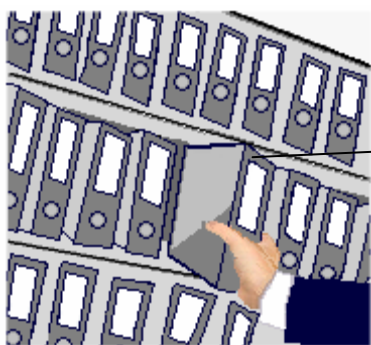


## HEAD Data Portal

Maybe you are familiar with the following problem: During a measurement, you have assigned your recordings intuitive file names such as "engine\_2245\_reconf\_3\_mod1.hdf" or "carr465\_test\_A1\_cov.hdf". At the time of the recording, it was entirely clear that "mod1" referred to the modification with the cover in place and "cov" meant the recording without the cover ... or was it the other way round?

Making recordings costs time and money. But, if after a few months nobody can determine what those files contain, the recordings quickly become worthless. Incorporating good, comprehensible documentation ensures the value of the data will be maintained.

The HEAD Data Portal assists you in this respect, and it offers a lot more!



With the HEAD Data Portal, you can bring order to your data, allowing quick and easy access to your recordings!

In the HEAD Data Portal, documentation is attached directly to folders and files. That way, it is always where you need it!



## Documentation during Recording with HEAD Recorder

Data can already be documented during the recording stage with HEAD Recorder. For this purpose, HEAD Data Portal provides templates, in which all required information can (or must) be entered according to the project specifications, e.g. by the project leader.

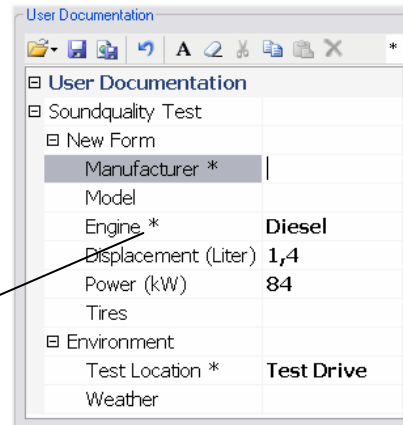
Prior to the measurement, a folder for the subsequent recordings can be specified and prepared with the required information. This information associated with the folder is then applied to all recordings saved in this folder. This means that information that applies equally to all subsequent recordings need only be entered once.

Of course, it is also possible to save individual information for each measurement. This can be, for example, comments by the measurement technician if he noticed something during the measurement.

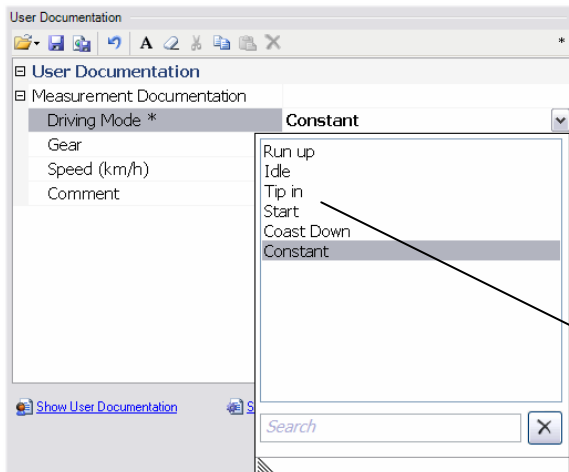


Example of a documentation template, which is filled in once for a folder and then applies to all objects contained in this folder

The fields marked with an asterisk are mandatory fields that must be filled in.



User Documentation	
Soundquality Test	
New Form	
Manufacturer *	
Model	
Engine *	Diesel
Displacement (Liter)	1,4
Power (kW)	84
Tires	
Environment	
Test Location *	Test Drive
Weather	



User Documentation	
Measurement Documentation	
Driving Mode *	Constant
Gear	Run up
Speed (km/h)	Idle
Comment	Tip in
	Start
	Coast Down
	Constant



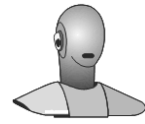
Example of documentation associated with a single measurement

The screenshot also shows an expanded pick list, from which the applicable entry can simply be selected during the recording.

The templates to be used for the documentation can be specified in advance. They can then be used, for example, for all measurements within a department, a project or at a certain test bench.

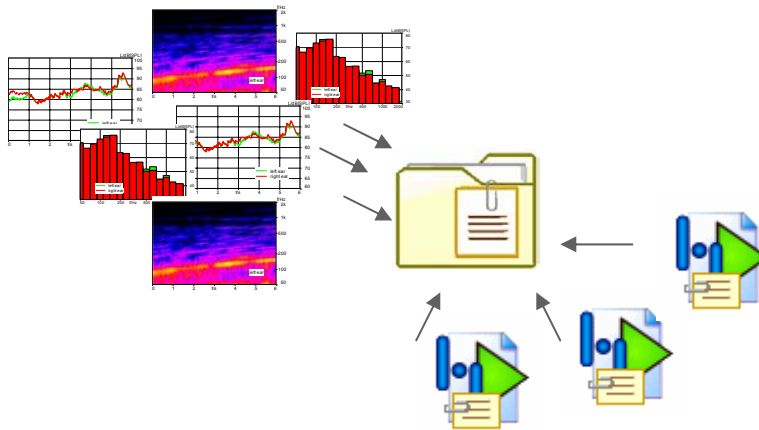


Avoid typing errors and standardize your documentation by creating pick lists for your templates, from which the applicable entries can be selected during the measurements. You can also define dependencies between the pick lists. For example, if a certain car manufacturer has been selected from a pick list, a corresponding pick list will show only the car models offered by this manufacturer in the "model" field.



## Analyzing Recordings with ArtemiS

Any recorded data can be examined in detail using the ArtemiS analysis software. Using the file export function, the analysis results can be saved and are then available for future retrieval. Of course, ArtemiS allows the user documentation of each file to be displayed and edited if needed. If no documentation was created during the recording, it can be added at this time using the templates.



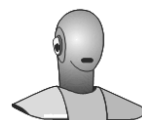
Save your analysis results to the same folder as the original recordings in order to have all associated information archived together.

## Data Organization in the HEAD Data Portal

With the HEAD Data Portal, you have access to all your data and the associated documentation. The various included tools allow you to compare your data, analyze them statistically and display them together in diagrams. And thanks to the documentation, you always know what is contained in your folders and files. With the “Documentation Summary”, you can view the entire documentation available for an item. This includes not only the user-defined documentation described above, which is created by the user, e.g. during the recording with the HEAD Recorder, but also inherent documentation, which is created automatically by the HEAD Data Portal. This documentation includes technical details about the file, such as the number of channels, the physical measurement units of all channels, etc.



Initially, you need to index your data by adding them to a database. That way, the HEAD Data Portal generates a sort of “table of contents”. The database itself only stores this “table of contents”. The actual data remain in their original locations, so the database requires very little disk space.



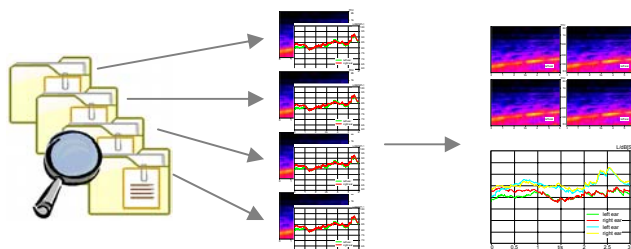
### Finding files



In the HEAD Data Portal, indexed data can be searched with easy-to-use and convenient functions. It is possible to combine several search terms or criteria. For example, you can search across several projects to find all files created on the same test track and with the same recording equipment, provided that this information has been stored in the user documentation.

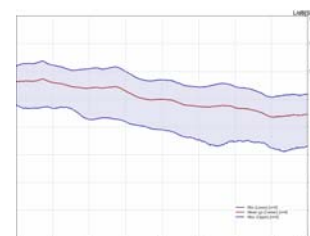
### Comparing files

The files found (or their individual channels) can then be easily displayed and compared in the Data Viewer. Just as easily, you can also drag files from a Desktop Navigator folder directly into the Data Viewer.



### Statistical evaluation

With the HEAD Data Portal, you can not only compare files visually, but also examine them using a number of statistical functions. For example, you can calculate scatter band functions to use in the evaluation of analysis results.



### Exporting combined data to ArtemiS

The ArtemiS Manager allows the data compiled in the HEAD Data Portal to be exported to ArtemiS with a single mouse click. In ArtemiS, further analyses can be performed, or the data can be exported in WAV format.

### Information inheritance

In the HEAD Data Portal, information is inherited, i.e. user documentation associated with a folder is also displayed for each object within this folder. This allows a very efficient workflow: General information applying to all items in a folder need only be saved once for the folder. Individual information can be saved directly with the respective file, and with a mouse click you can view all information at once in the "Documentation Summary".



Customize the HEAD Data Portal to your personal needs: Arrange all required tools and windows the way you want them, and simply hide the rest.