

**DATA SHEET**

**SCU T6 (Code 3390)**

*Signal conditioning unit for thermo elements, 6 channels*



SCU T6 - Front and rear view

**Overview**

SCU T6 is a multi-channel measurement converter for the connection of up to 6 thermocouples (type K) in combination with the SQlab II or SQlab III frontend from HEAD acoustics.

Connected to one or several DIC 20 modules or a DIC 61 module of SQlab II or SQlab III, SCU T6 delivers reliable temperature measurements with high precision.

The standard temperature range from -50 to +150 °C (-58 to 302 °F) can be changed at the factory to one of four other temperature ranges (see technical specifications upon request).

For this purpose, please contact your sales representative or sales engineer.

**Features**

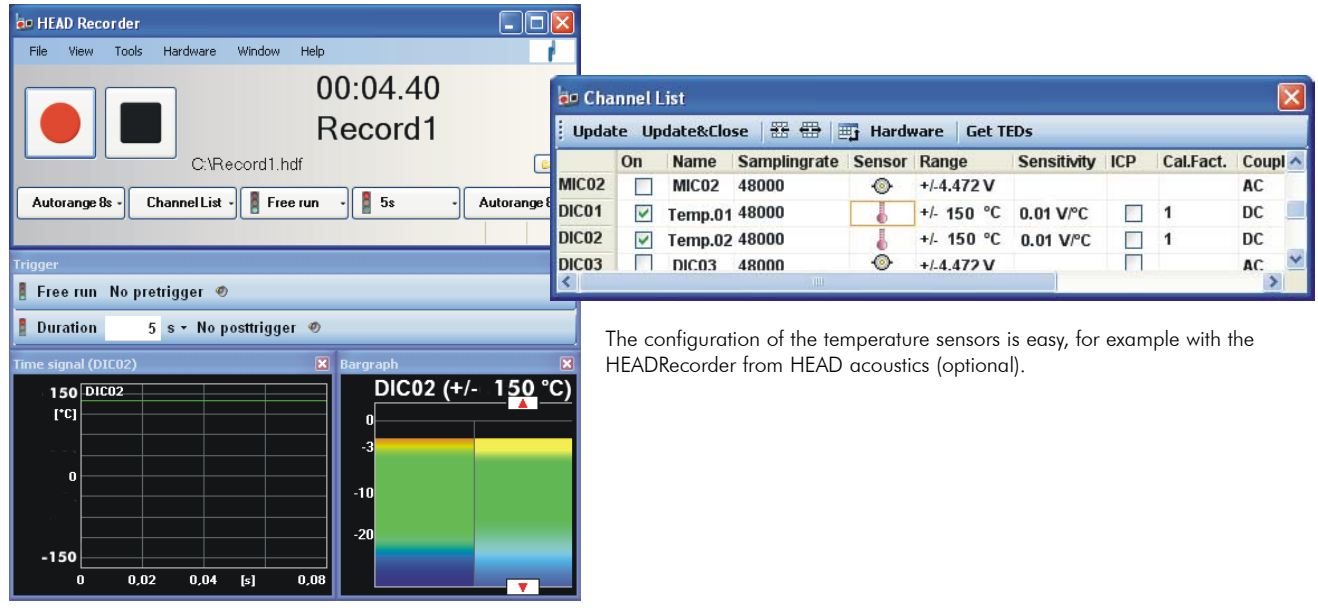
- Direct connection of up to 1 - 6 thermocouples (type K)
- Operation with the SQlab II or SQlab III frontend (DIC 20 or DIC 61 module) from HEAD acoustics
- Power supply via SQlab III frontend or PSH I.1 power adapter
- High accuracy (Greisinger type measurement converter)
- Rugged housing
- Easy handling

**Standard Delivery Items**

- SCU T6 (Code 3390) Signal conditioning unit for thermo elements, 6 channels
- CXX III.2.5 (Code 5179-2.5) cable XLR 4 pin male <-> XLR 4 pin female, 2.5 m (8.2 ft) Power Supply SQlab III <-> SCU T6
- CXO I.1 (Code 5176) Power Supply SCU T6 with insulated spade terminals, 2 m (6.5 ft)

**Accessories (not included)**

- PSH I.1 (Code 1364) Power adapter for SCU T6



The configuration of the temperature sensors is easy, for example with the HEADRecorder from HEAD acoustics (optional).



SCU T6 is connected to the DIC 20 of SQLab II or SQLab III with a BNC cable or the DIC 61 module with the cable CDB II.1 (Code 3556) - standard delivery item of DIC 61

## Technical Specifications

### Electrical characteristics

Supply voltage:	12 - 30 V
Power consumption:	1 W / 12 V, 2 W / 20 V
Sensor:	Typ K
Temperature range (standard):	-50 °C to +150 °C (-58 °C to 302 °F)
Accuracy:	+/- 0,5 °C (0.9 °F)
Output voltage range:	0 - 1 V
Output voltage range:	> 10 kOhm
Operating temperature (SCU T6):	0 to 50 °C (32 °C to 122 °F)

### Mechanical characteristics

Weight:	1.1 kg (2.42 lb)
Dimensions (B x T x H):	327 mm x 100 mm x 44 mm (12.83" x 3.39" x 1.73")

### Optional (please specify with your order)

Four alternative temperature ranges are available via factory configuration:

- 0 °C to +100 °C; 02 °F to 212 °F (optional)
- 200 °C to +30 °C; -328 °F to 86 °F (optional)
- 0 °C to +600 °C; 02 °F to 1112 °F (optional)
- 0 °C to +1200 °C; 02 °F to 2192 °F (optional)

Please contact your sales representative or sales engineer.

### Note:

Regarding radio interference, SCU T6 complies with the class A standard (industry). In particular cases, the operation of SCU T6 may cause interference with other devices (e.g. car radio or other measurement devices). A complete setup should be checked for such interference, and specific interference suppression measures should be taken if needed.

