

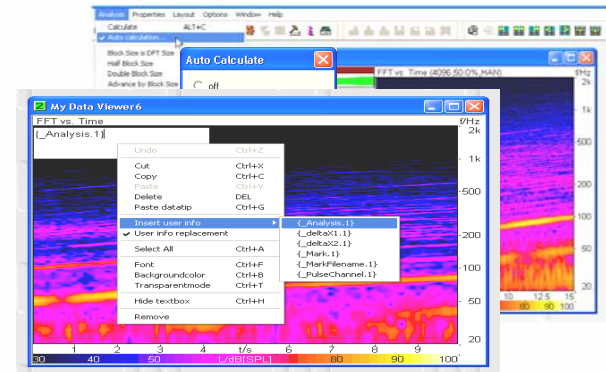
Artemis 7

New Features



Increased Efficiency of ArtemiS 7

More intuitive operation – from recording and analysis, to final report generation and export into universal data formats – to help you achieve greater working efficiency.



The development of the current Version 7 of ArtemiS focused primarily on establishing a more intuitive, easy and secure operation of ArtemiS. A series of new functions helps the user obtain the desired results in fewer working steps.

In addition, the latest version of ArtemiS contains new analyses and functional improvements to existing analyses.

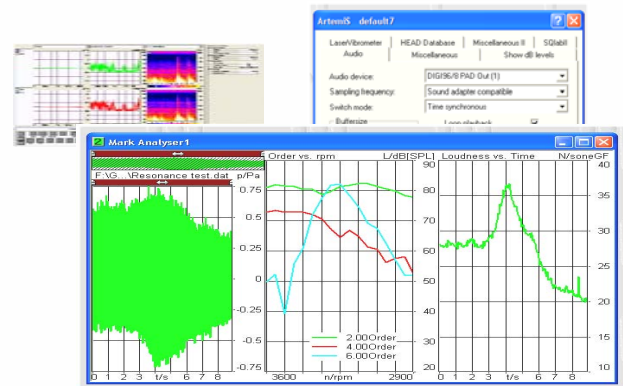


New Features: Overview

ArtemiS 7 is an analysis system designed to meet the ongoing requirements of the market as defined from the close interaction we have with our customers.

We would like to present some of the innovations carried out in the following areas:

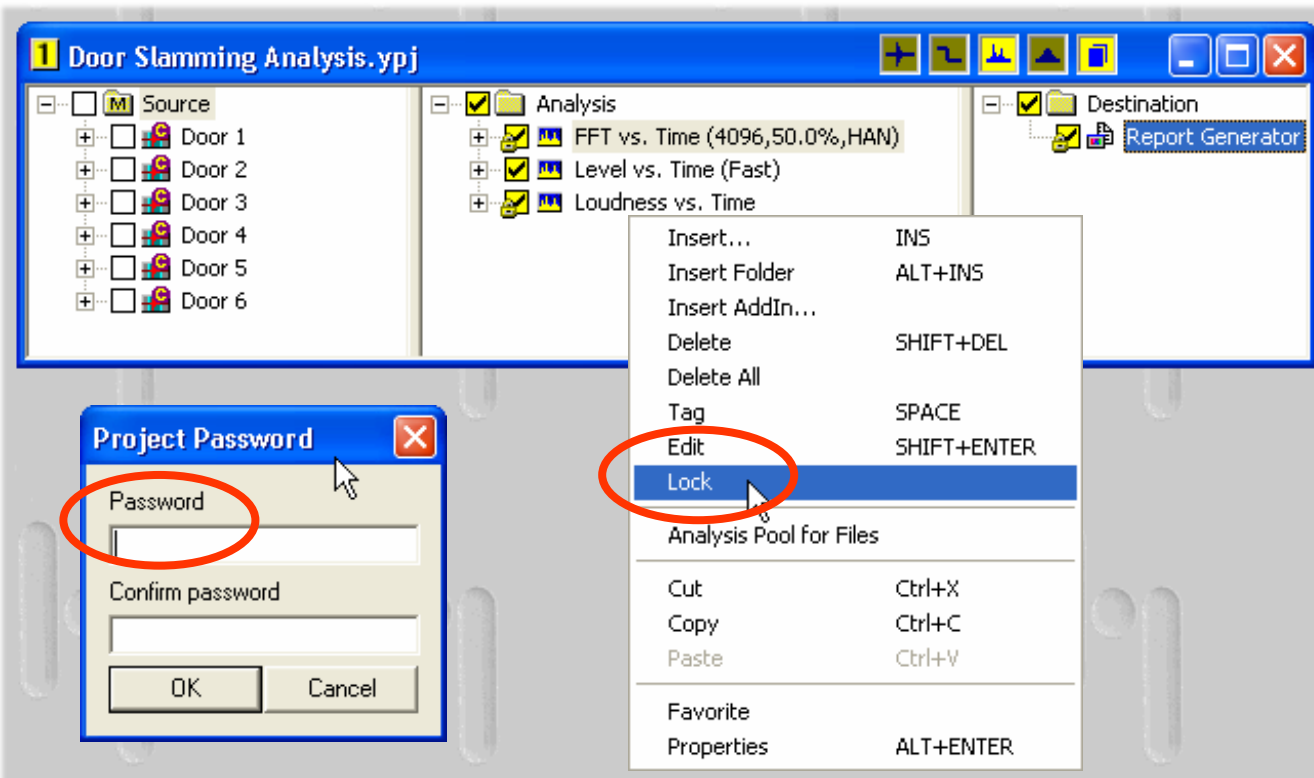
- Operation / Security
- Display of results
- Functions / Analyses
- Documentation
- Data acquisition
- Other



If you have any questions concerning the innovations described in this presentation or you would like the complete overview of new features, please contact our sales engineers and sales partners. They would be happy to assist you.



Locking of Pool Element Characteristics



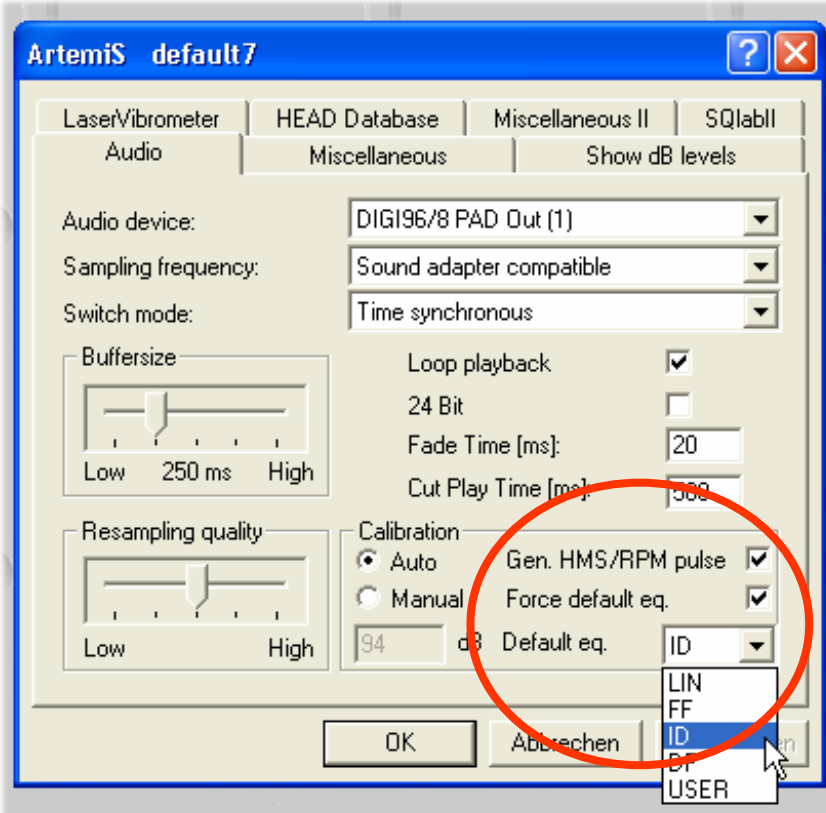
In the context menu of all pools the entry “Lock” was added.

By inserting a password, the elements of a project can be protected against deleting and editing.

- For your convenience it is now also possible to automatically save projects.

Autosave projects every minutes

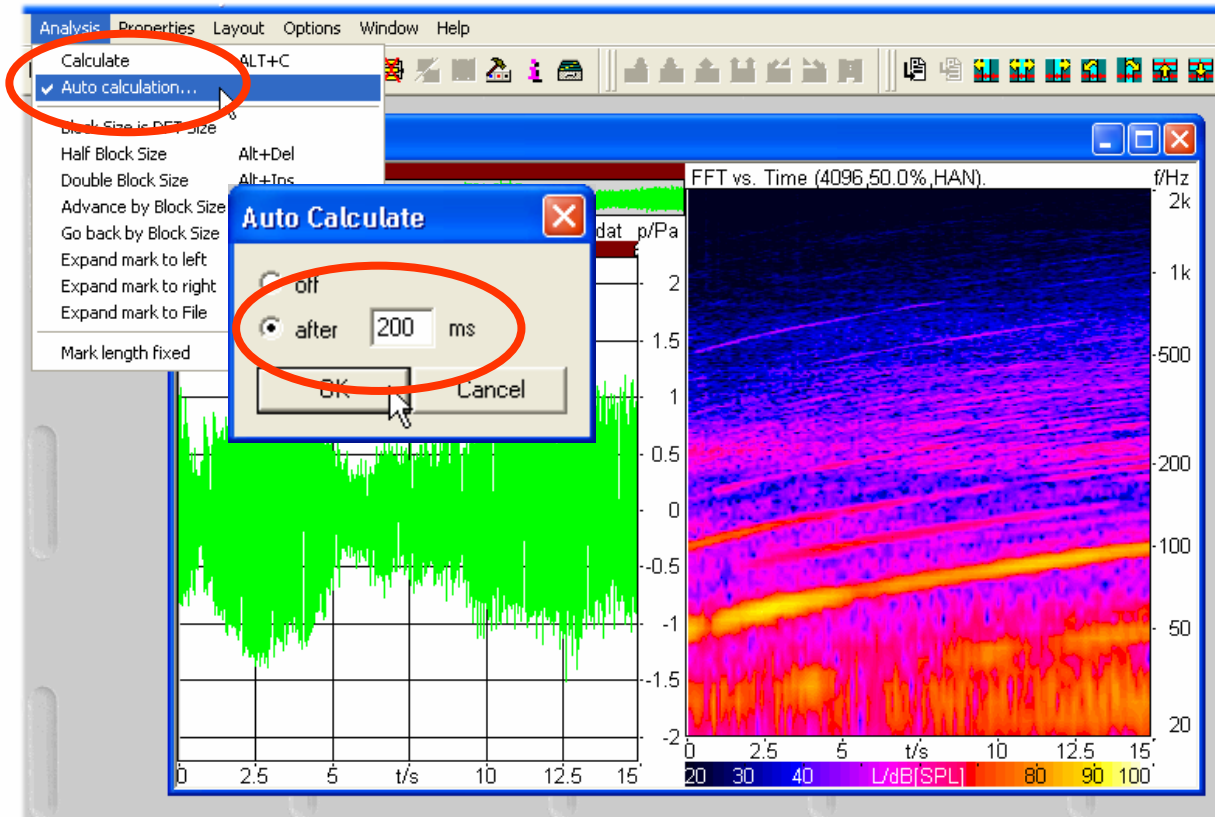
Generation of HMS/RPM Data



The generation of HMS data and rpm pulses in the 16th bit of an audio file can selectively be activated or de-activated. HMS data can also be generated when the recording does not contain HMS data.

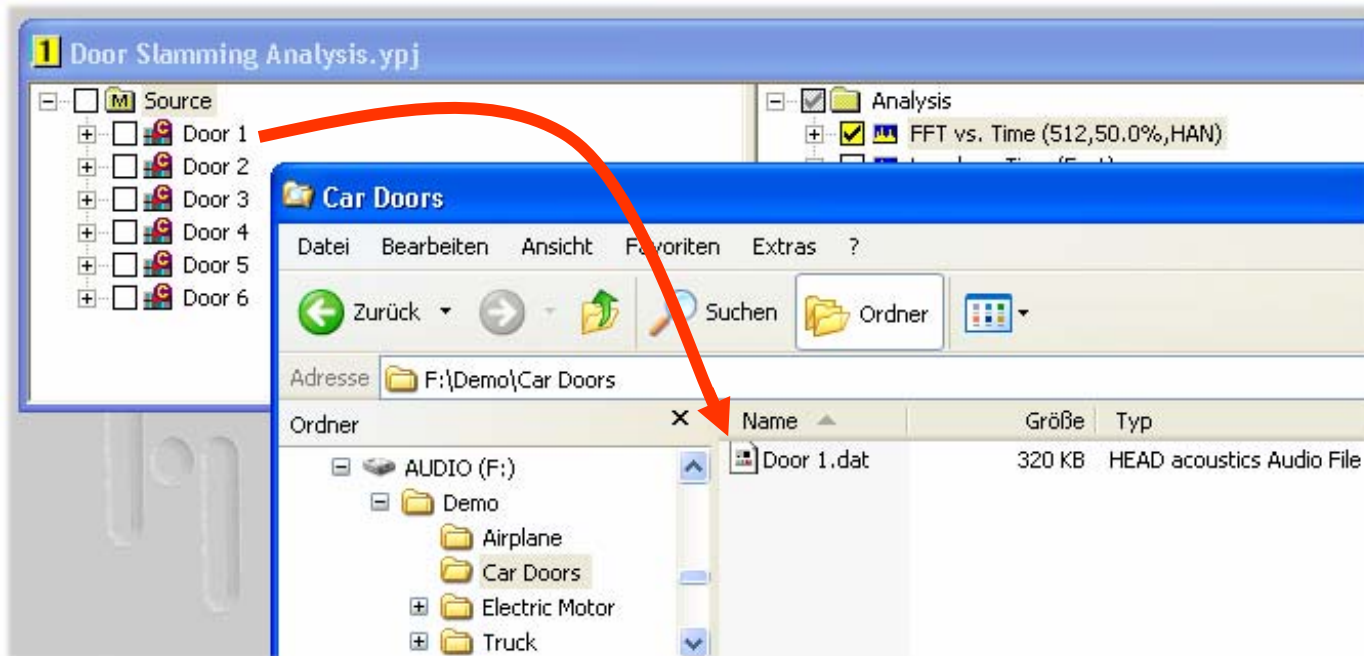
With the generated HMS data a PEQ can automatically be set to the correct loudness and equalization during playback.

Interactive operation in the Mark Analyzer



With the menu function “Auto Calculation” an automatic recalculation of the analysis data in the *mark analyzer* can be activated by entering a user-defined time delay. The effects of a modification of the filter or analysis settings are thereby directly visible.

Drag & Drop from the Project Window



With Drag & Drop you can insert files from the *Source Pool* of an ArtemiS project into other applications such as the *Window Explorer*.



Editable legend



With a double click on the legend, a new dialog will open, in which you can insert user-defined information for the legend, for example.

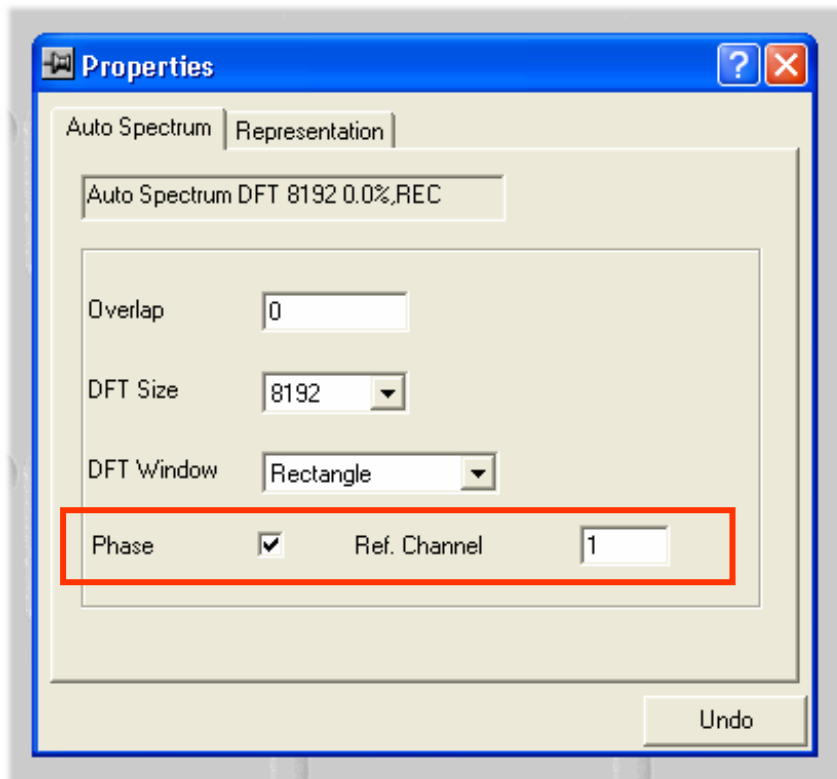
New Setting Possibilities for the Diagram Axes



Additional display options for the diagram axes are available:

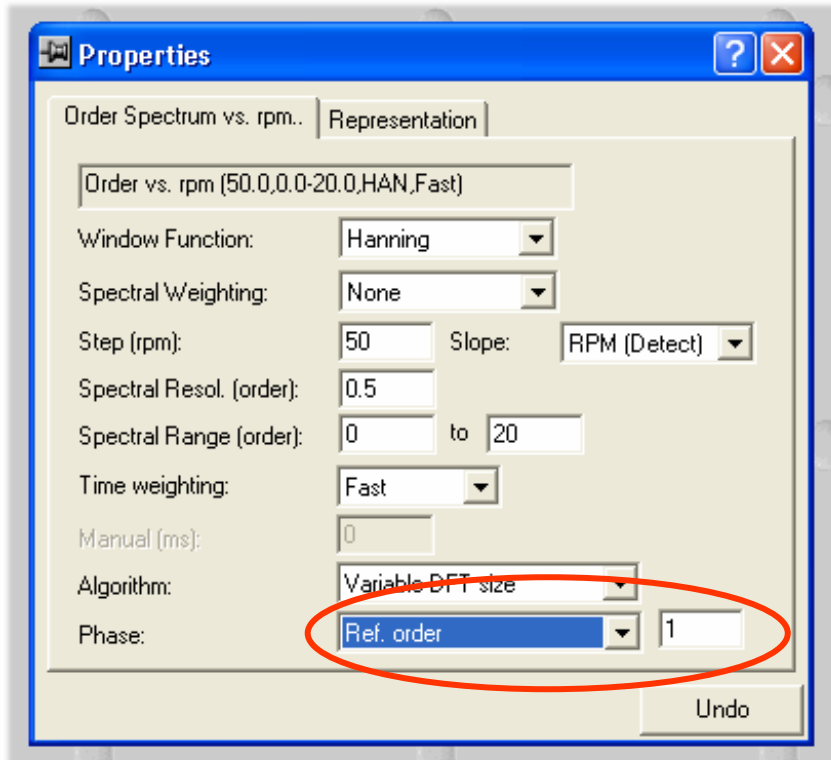
e.g. it is possible to define a certain margin in order to standardize the display of the diagrams, or to write the unit next to the axes.

Auto Spectrum for the Running Mode Analysis



For the running mode analysis (ODS) you can now display the phase relating to a reference channel in the analysis *Auto Spectrum*.

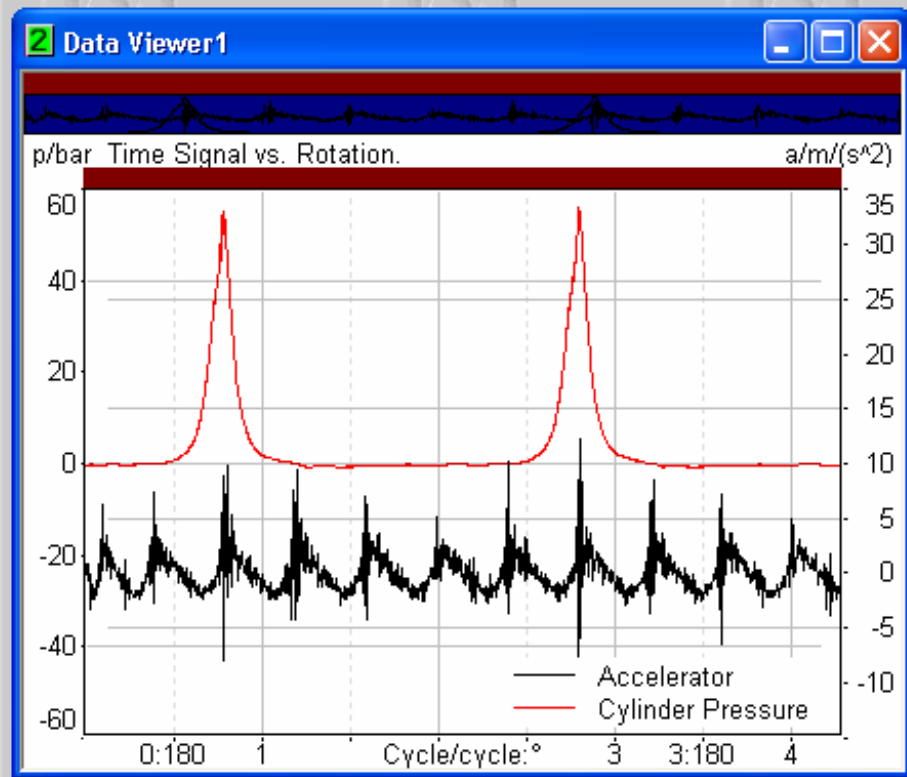
Phase relation to a reference order



To be able to analyze the phase of orders with respect to each other, the order analysis has been extended. Now ArtemiS can calculate the phase in relation to a selected order.



New Analysis: Time Signal vs. Rotation



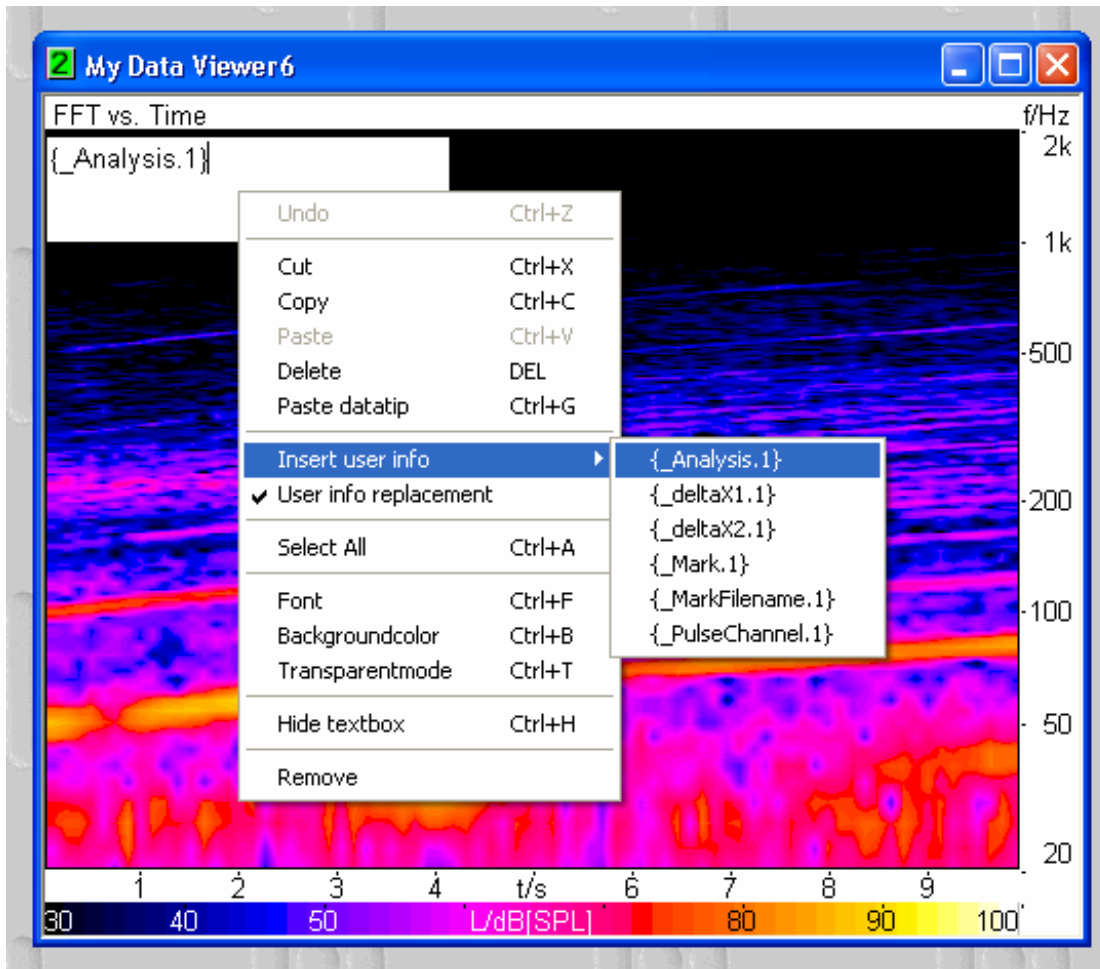
With the new analysis "*Time Signal vs. Rotation*" you can display the time signal vs. the rotation angle, e.g. the crank angle.

- Another new analysis is the filtered level analysis versus rpm:

Level vs. rpm (Fast, 800 Hz - 1200 Hz)



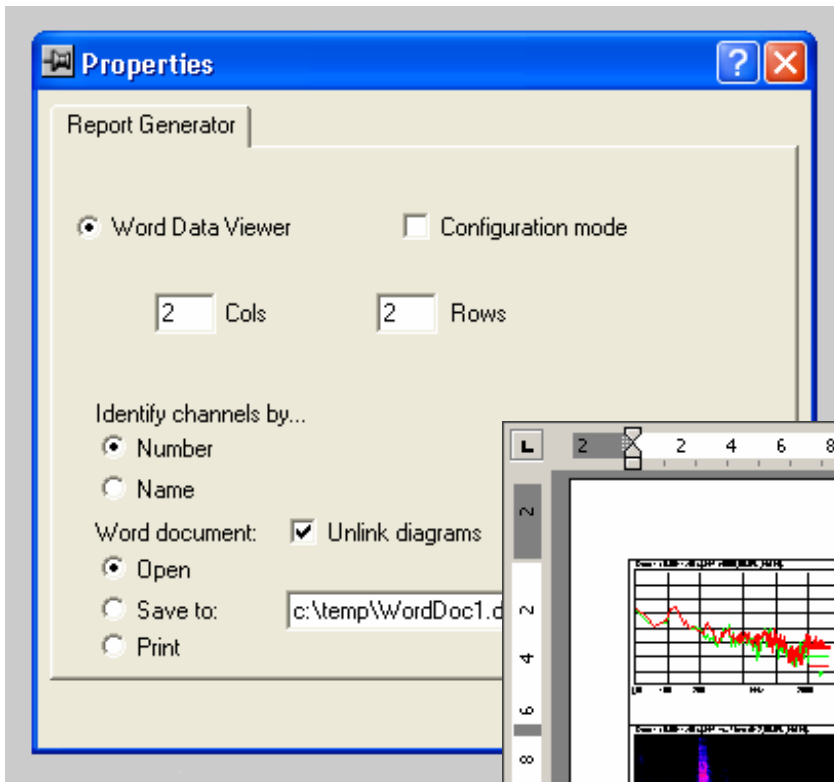
Automatically Generated Analyses Information



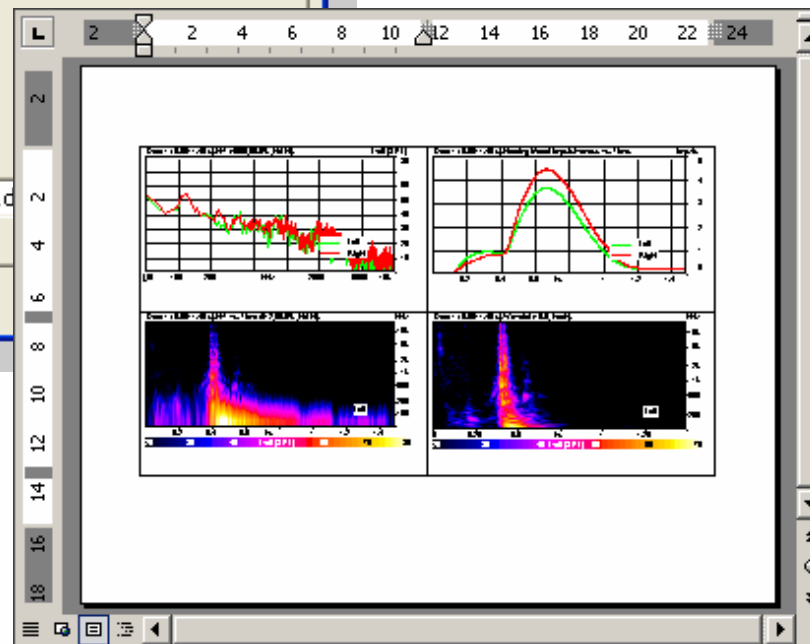
Now, analysis results contain additional information, that are administered and saved in the same way as the user-defined information (UDI). For example, these entries can be displayed in a text box in a *Data Viewer* window.



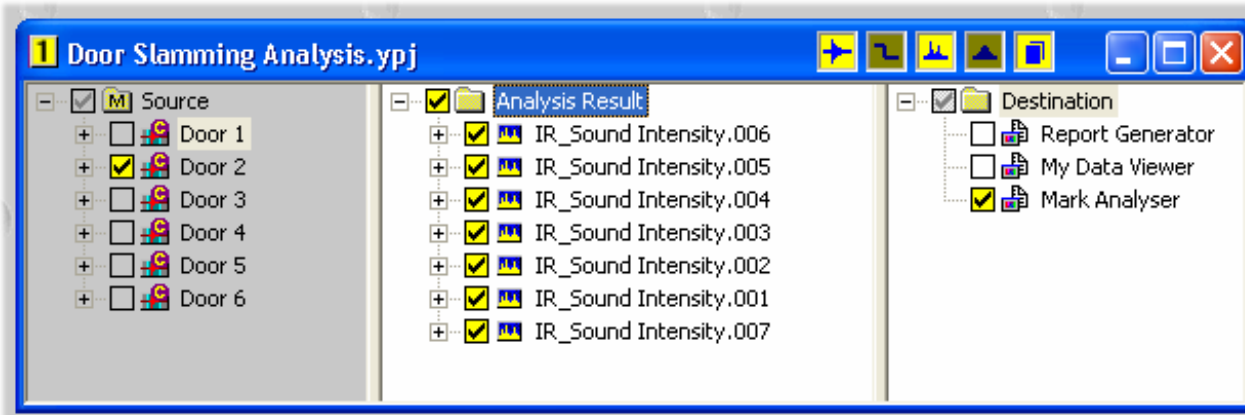
Report Generation in the ArtemiS Basic Version



The basic version of ArtemiS now contains a simple report generator for automatic report generation.

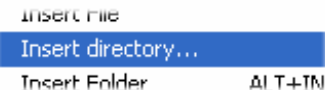


Analysis Pool for Files

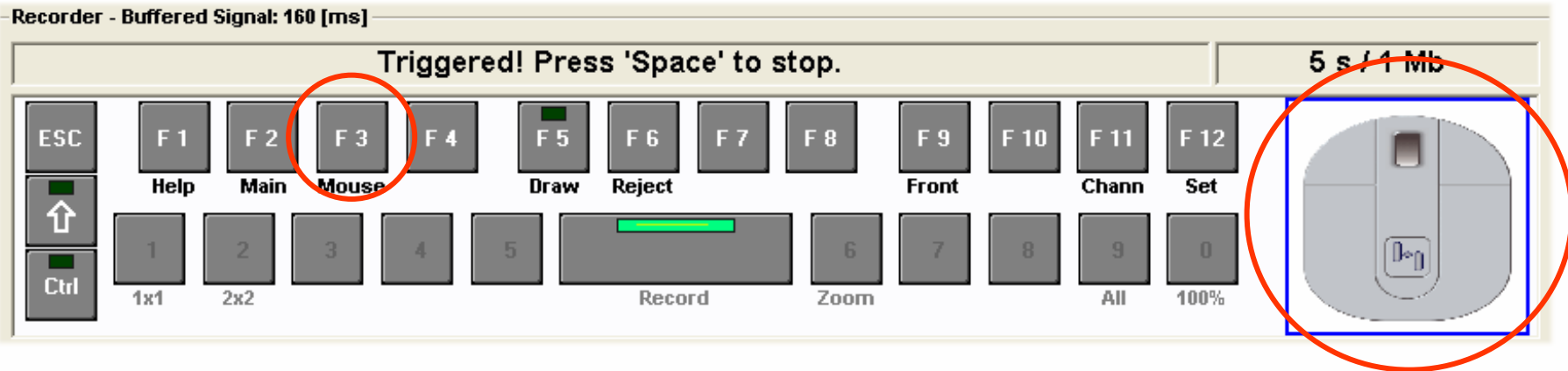


The “Analysis Pool for Files” can now be accessed via the COM interface. Thereby, the insertion of analysis results, e.g. for a statistics evaluation via remote control is now possible.

- In addition, directory structures with sub-files can now be inserted in the “*Analysis Pool for Files*”.

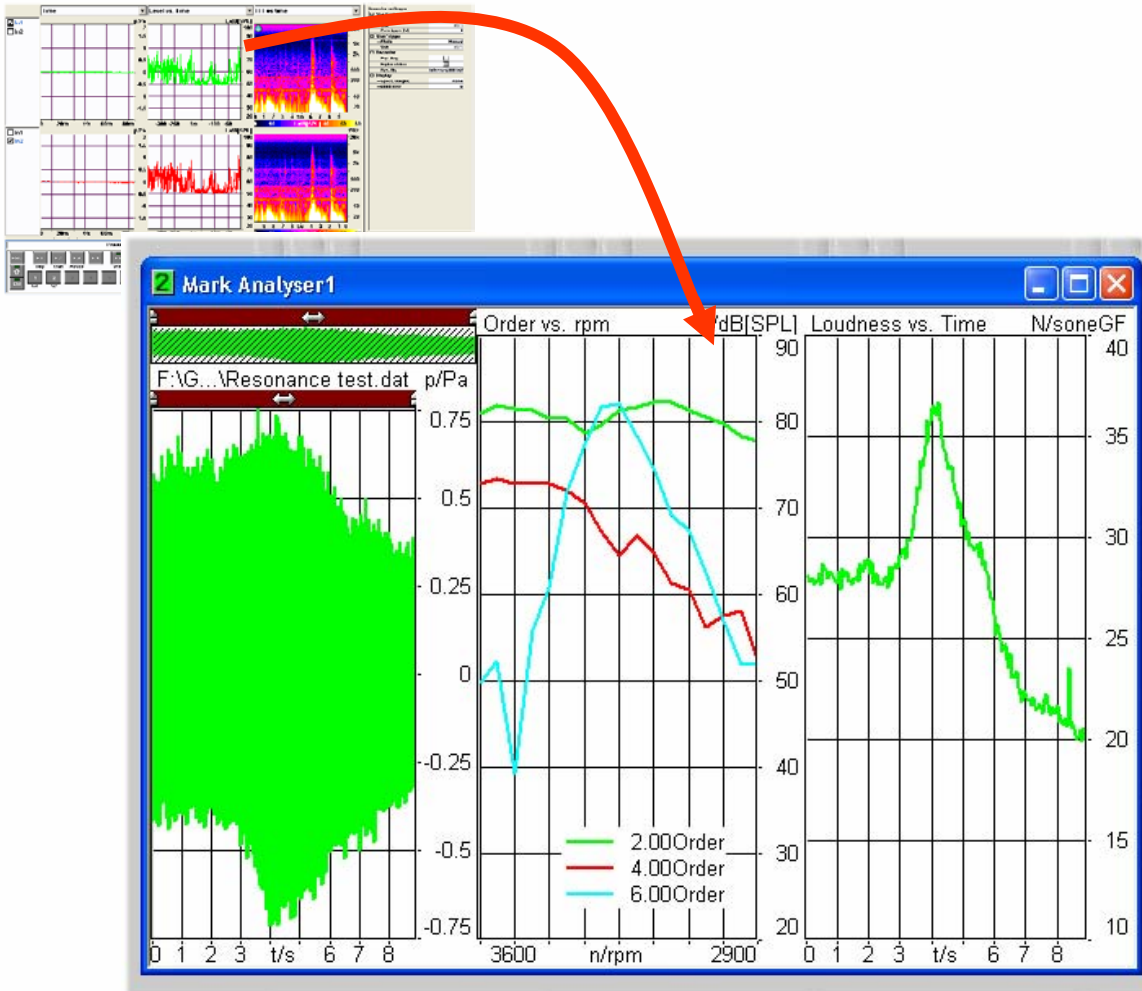


Remote Control via Wireless Mouse



In the recorder interface of the data acquisition module, a remote control mode can be activated. In this mode, recordings can be started and stopped with a wireless mouse.

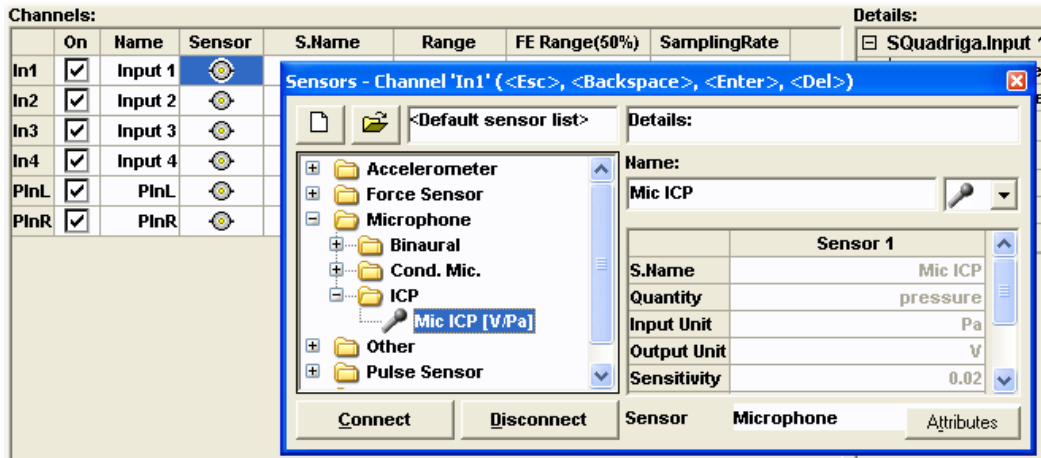
Automatic off-line Calculation



The recordings that were generated with the data acquisition module can automatically be loaded into a pre-configured mark analyzer in ArtemiS.

Directly after the measurement, the calculation results, e.g. also of rpm-dependent analyses, are available.

Simplification of the Sensor Administration











The sensor administration of the data acquisition software is simplified.

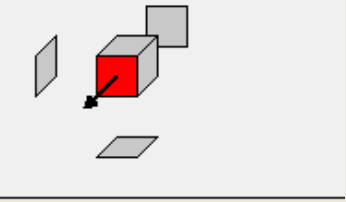
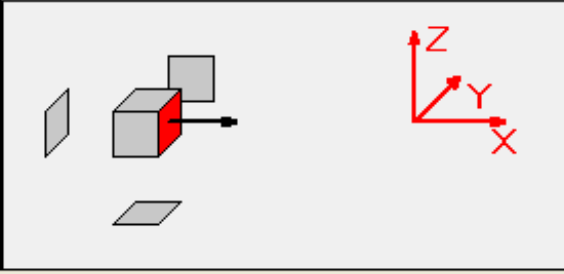
- In addition, the user-defined information (UDI) can now also be saved for the data acquisition.



Simplification of the Sound Intensity Measurement

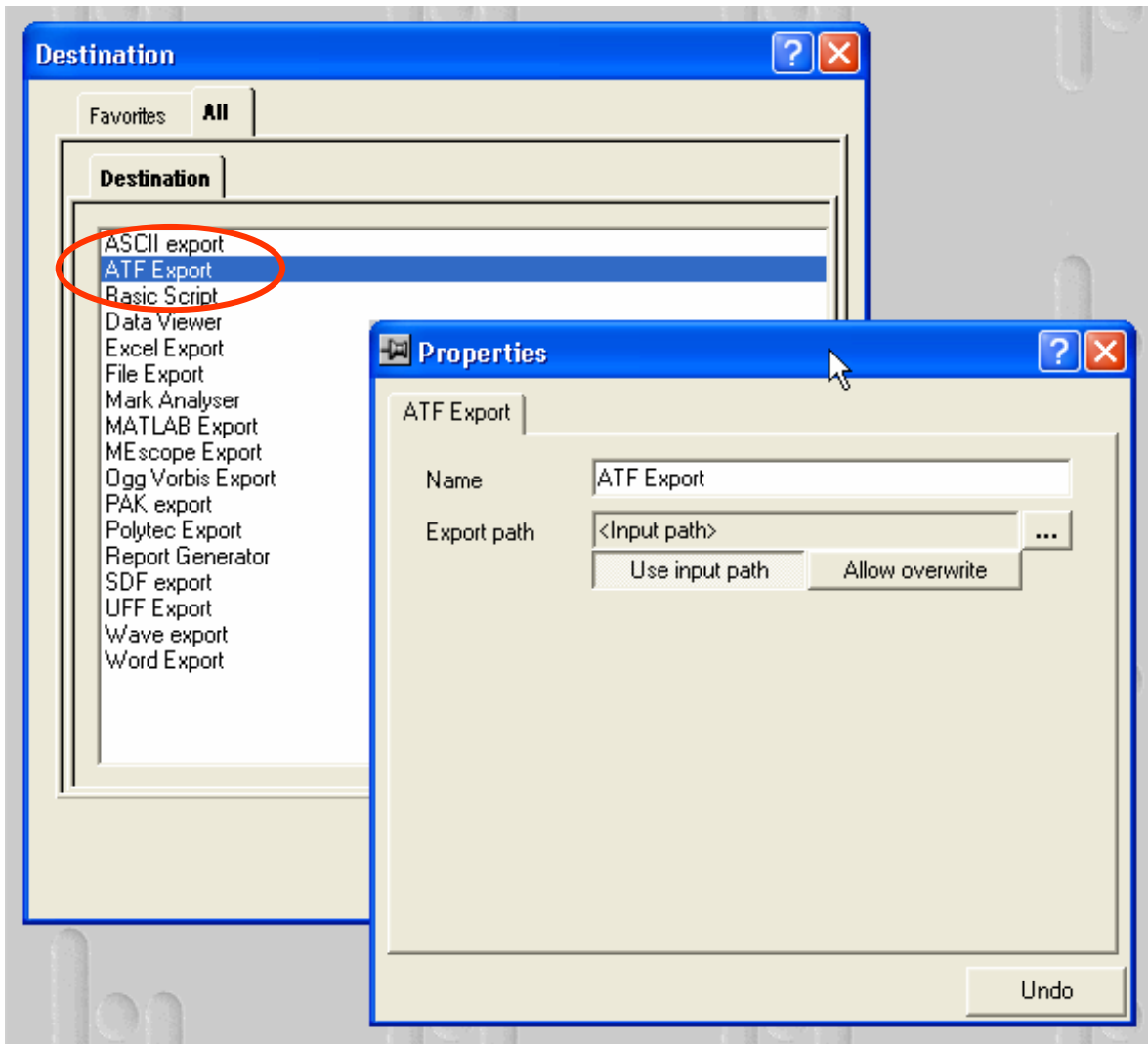
		1	2	3
	Brake			
	Reference	<input checked="" type="checkbox"/>	<input type="checkbox"/>	<input type="checkbox"/>
	eRule	fix	Inc. 2	Inc. 2
1	 Meas 1	+ 1x		
2	Meas 2	+ 1x		
3	Meas 3	- 1y		
4	Meas 4	+ 1x		

Schedule:		
		In2
		
	Rule	fix
1	 Meas_1	+ 1X
2	Meas_2	+ 2X
3	Meas_3	+ 3X
4	Meas_4	+ 4X
5	Meas_5	+ 5X
6	Meas_6	+ 6X
7	Meas_7	+ 7X
8	Meas_8	+ 8X
9	Meas_9	+ 9X
10	Meas_10	+ 10X

The sound intensity measurement was simplified: now the scheduler function of the modal analysis can also be used for intensity measurements, among others.

ASAM Transfer Format

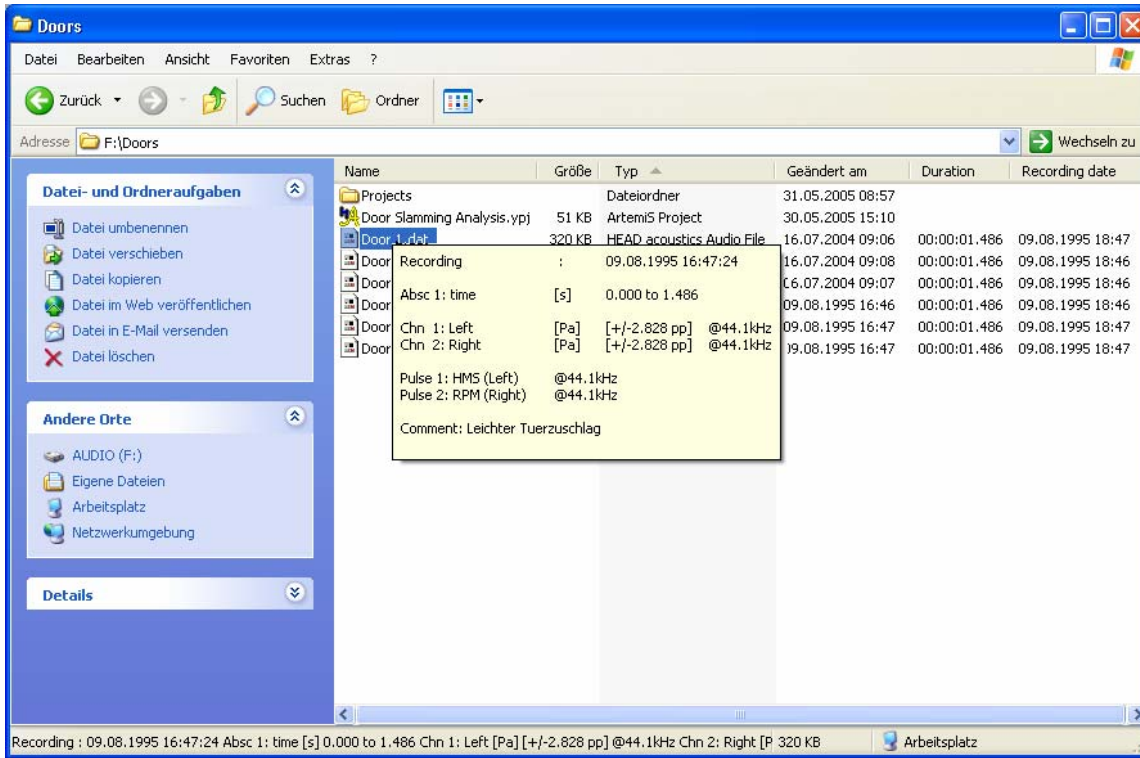


As of ArtemiS 7 the ASAM Transfer Format (ATF) is supported.

For a simplified data exchange ATF files from other systems can be imported and also be exported into the ATF format.



HEAD Explorer Extension



The new HEAD Explorer Extension extends your Windows Explorer:

- Tool tips contain information about the selected sound file.
- Display of acoustics-related details, i.e. selectable additional columns with channel number, sampling rate, recording length etc.



HEAD Explorer Extension

Name	Größe	Typ	Geändert am	Duration	Recording date
Projects		Dateiordner	31.05.2005 08:57		
Door Slamming Analysis.yproj	51 KB	ArtemiS Project	30.05.2005 15:10		
Door 1.dat	320 KB	HEAD acoustics Audio File	16.07.2004 09:06	00:00:01.486	09.08.1995 18:47
Di		HEAD acoustics Audio File	16.07.2004 09:08	00:00:01.486	09.08.1995 18:46
Di		HEAD acoustics Audio File	16.07.2004 09:07	00:00:01.486	09.08.1995 18:46
Di		HEAD acoustics Audio File	09.08.1995 16:46	00:00:01.486	09.08.1995 18:46
Di		HEAD acoustics Audio File	09.08.1995 16:47	00:00:01.486	09.08.1995 18:47
Di		HEAD acoustics Audio File	09.08.1995 16:47	00:00:01.486	09.08.1995 18:47

Eigenschaften von Door 1.dat

Allegemein Sicherheit Dateninfo **Info** Show

F:\Doors\Door 1.dat

p/Pa

0.5
0.4
0.3
0.2
0.1
0
-0.1
-0.2
-0.3
-0.4
-0.5

0 0.25 0.5 1 1.25

t/s

— Left
— Right

OK Abbrechen Übernehmen

Furthermore, the new HEAD Explorer Extension extends the context menu in the Windows Explorer with the entries “Play” and “Convert to Wave”, like in the previous version. In addition, the function “Convert to Wave (+Pulse)” was inserted. With it (without ArtemiS) a HDF file can be converted into a Wave file including pulse information. The properties page is extended by two new tabs, e.g. the display of the time signal (also without requiring ArtemiS).

