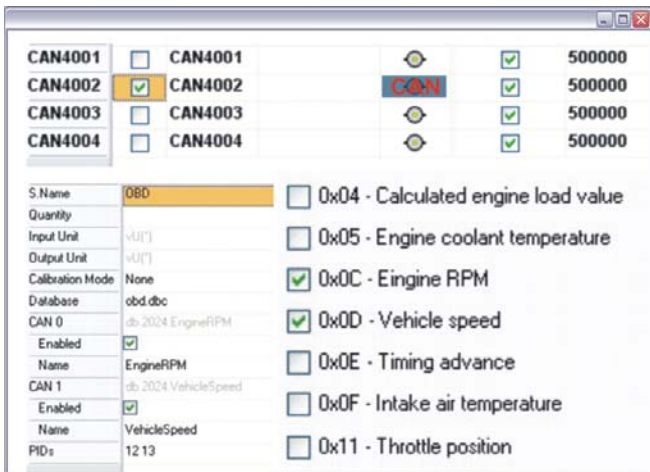


DATA SHEET

ADA-CAN (Code 5024)

ArtemiS Data Acquisition Module for recording of CAN bus signals and OBD-2 information
 ASM 24 (Code 5024) of the ArtemiS SUITE includes ADA-CAN.



Overview

The ADA-CAN data acquisition module can be used for recording CAN bus signals and OBD-2 information.

From the recorded data, a user-selected set of CAN bus signals can be extracted, which are automatically made available in ArtemiS for evaluation and further processing. During the recording, individual signals can be extracted from the data stream and used as trigger.

The intuitive user interface of the ADA-CAN module does not require in-depth knowledge of the CAN bus protocol.

With ADA-CAN, the acquisition of OBD-2 information is just as simple. The desired standard quantities can be selected, and the OBD-2 information can also be recorded as additional channels.

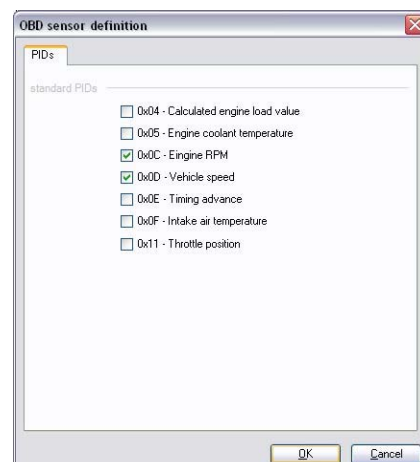
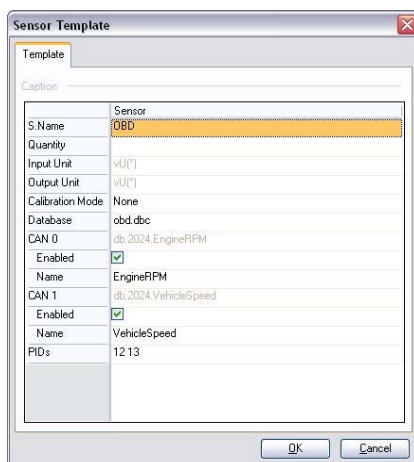
Various measurement front ends from HEAD acoustics are available for the acquisition of CAN bus signals and OBD-2 information.

Acquisition of Can bus signals

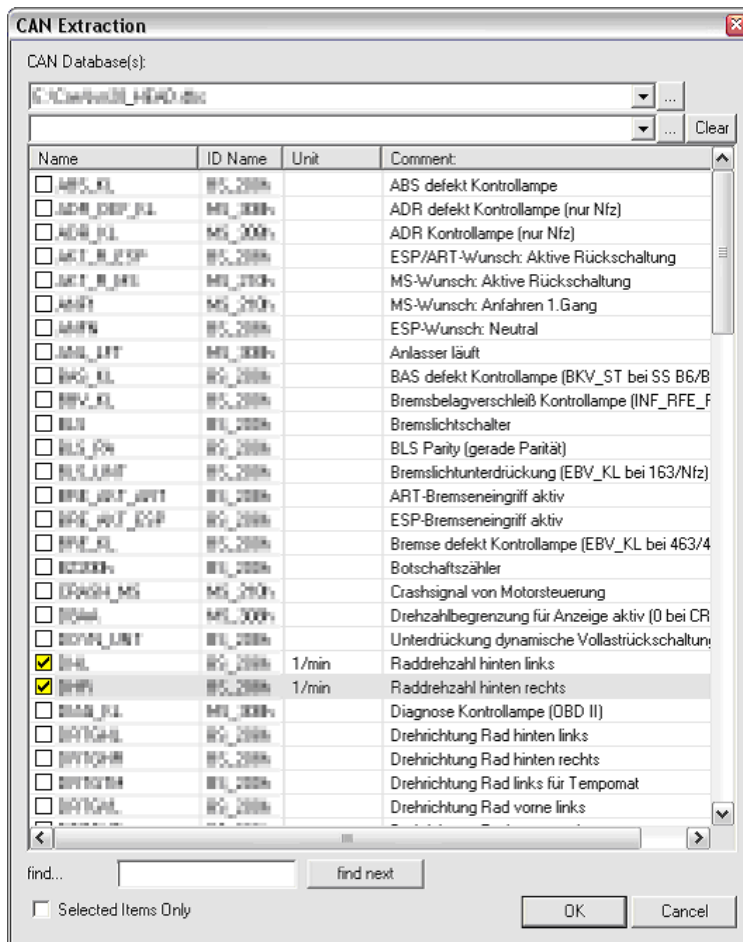
- The entire CAN data stream with the database in DBC format (manufacturer- and model-specific DBC databases are not included) can be recorded with the HEAD Recorder software
 - If required, individual selected CAN bus data can be extracted during the measurement
 - Individual CAN bus signals can be used as trigger
 - Online monitoring during the recording
 - Individual CAN bus data can be saved as additional channels
 - Extracted or complete CAN bus data can be passed to ArtemiS for further processing
- After recording the complete CAN data stream, individual or all CAN bus information can be extracted from the stream in ArtemiS (with DBC database)
 - Clearly arranged window for selecting individual CAN bus signals
 - Multiple DBC databases can be used for extraction

Acquisition of OBD-2 information

- Recording of OBD-2 information (vehicle speed, engine RPM, throttle position etc.)
- Online monitoring during OBD-2 recording
- OBD-2 information can be used as trigger
- OBD-2 information can be saved as additional channels



The definition of sensors for recording OBD-2 information is easy and straightforward. Custom-designed templates can be saved and facilitate a quick use.



Based on a manufacturer- and model-specific DBC database, ArtemiS provides a list of CAN bus channels, from which the signals to be extracted can be selected.

Recommended Front-ends

CAN bus signals and OBD-2 information (via CAN according to ISO 15765-4):

- HEAD/lab
- SQuadriga II
- CAN4 (DATaRec4)

CAN bus signals und OBD-2 information via adapter PCAN-USB (PEAK-System Technik GmbH):

- SQuadriga
- BEQ II
- HMS IV.0 / HMS IV.1 / HMS III.0