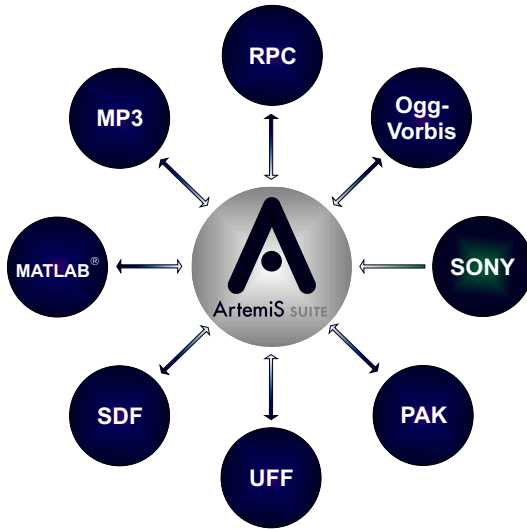


DATA SHEET

ArtemiS SUITE Import & Export Module (Code 5023)

ArtemiS SUITE Module for importing and exporting measurement data and analysis results



Features

- Expansion module of the ArtemiS SUITE with import und export options
- MATLAB®
 - Compatible with MATLAB 6. ASM 23 exports all information contained in a result window (channels, abscissae, supporting points, pulse data etc.) to a MATLAB file without requiring MATLAB being installed
 - The created structure complies with the shdf format. The MAT files can be further processed with MATLAB and reimported into the ArtemiS SUITE
- MP3
 - Export of two-channel data files with input data sampled either with 32 kHz, 44.1 kHz or with 48 kHz
 - Generating of a MP3PLUS file, containing additional information like for example channel units, calibration, comments, the date of recording or about the pulse channels of the original file
- Ogg Vorbis
 - Import: Audio signals (Ogg files)
 - Export: With adjustable range and fading options
- PAK
 - TDATA format; supported version PAK 4.2 (time data, PAK data)
- RPC
 - MTS RPC-III time history format (time data)
- SDF
 - Hewlett Packard Standard Data format (time data, SDF data)
- UFF
 - Universal File format Uff 58 and UFF 58b (analysis and time data, UFF data)
- Sony (MK II/III) [import only]
 - Sony binary format (time data, BIN data)
- In addition to the features included in the Import & Export Module of the ArtemiS SUITE, ArtemiS 12 provides the options of the Advanced Import & Export Module (ATP 15).

Overview

In addition to the import (Wave, ASCII) and export (Wave, ASCII, ATFX, Redefine Channels) options already included in the Basic Framework Module of the ArtemiS SUITE the Import & Export Module provides several special formats.

With ASM 23 all settings relevant for the import can be adjusted in a clear-structured window. If a format conversion is necessary, the Import & Export Module performs the required operations in the background.

The export functions provided by ASM 23 include a control mechanism: by such means, for example, only files containing a time signal can be converted to Wave format.

Requirements

- ArtemiS SUITE Basic Framework (Code 5000)

Settings

Ogg-Vorbis

Conversion Quality :	Using the slider to specify the conversion quality
Dynamic Range:	The modulation range of the HDF signal is transferred 1:1 to the Ogg Vorbis signal. The maximum amplitude within the file is detected and adapted to the highest possible value of the Ogg Vorbis file Declaration of the signal level producing full modulation of the Ogg Vorbis signal
Export Pulse Data:	Pulse data will be stored to an additional OGGPLUS file
Fade in/out:	Length of the fading adjustable
Duration (ms):	Specify the duration of the fading in ms for fading in and out

MP3

Input Data :	32 kHz / 44.1 kHz / 48 kHz
MP3PLUS file:	Exporting additional information (e.g. channel units, calibration, comments or the date of recording)
Bit Rate:	Fixed bit rate (32 to 320 kBit/s) / variable bit rate
Channel Selection:	Start with channel ... / one pair of channels / all channels
Dynamic Range:	Use original range from HDF (calibration) / full dynamic (autorange) / user-defined
Export Pulse Data:	Pulse data will be stored to an additional MP3PLUS file
Fade In/Out:	Length of the fading adjustable
Duration (ms):	Specify the duration of the fading in and out in ms

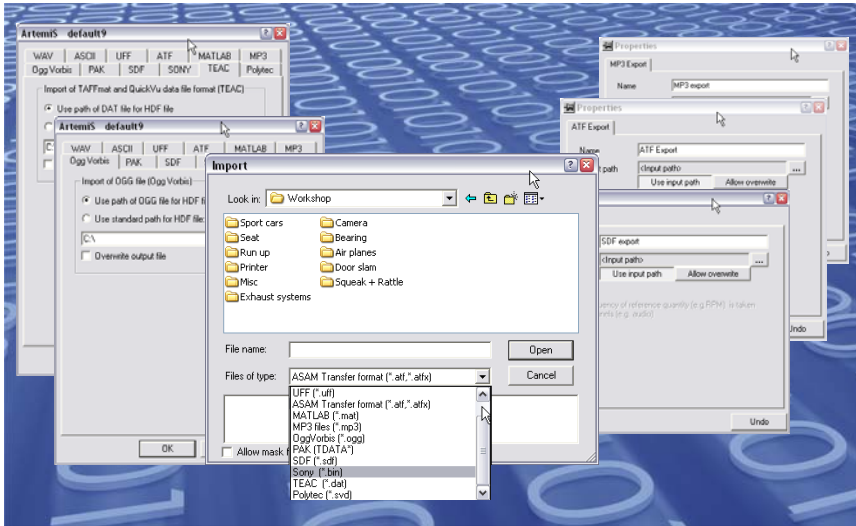
PAK

Documentation available in the PAK data set is converted to user documentation in the ArtemiS SUITE

UFF

Combination of multiple HDF files into one UFF file
DOF (Degree of Freedom) will be generated using the channel name
Binary format (UFF 58b): Selectable

for importing and exporting measurement data and analysis results that were created with third-party systems or are to be post-processed with third-party systems (e.g. application software) ASM 23 (Code 5023) of the ArtemiS SUITE includes ATP 15.



Import

- **TEAC**
TEAC QuickVu format and TAFF format (time data, DAT data)
- **Sony**
Sony binary format (time data, BIN data)
- **SDF**
(Hewlett Packard Standard Data format (time data, SDF data)
- **UFF**
Universal File format Uff 58 and UFF 58b (Analysis and time data, UFF data)
- **PAK**
TDATA format; supported version PAK 4.2 (time data, PAK data)
- **MATLAB**
MATLAB needs not be installed. For the import, a structure in shdf format (Structured Head Data File) is required, as created during the export.
- **OggVorbis**
Audio signals (Ogg files)
- **Polytec**
The import of files in the Polytec format is functional, if the software component File Access, Version 2.7 (of the Polytec GmbH) or superior is installed on the computer.

- **RPC**
MTS RPC-III time history format (time data)

Export

- **Basic Script**
User-specific export function
- **SDF**
- **UFF**
- **PAK**
- **MATLAB**
Compatible with MATLAB 6. ATP 15 automatically exports all information contained in a result window (channels, abscissae, supporting points, pulse data etc.) to a MATLAB file without requiring MATLAB being installed. The required software is included in ArtemiS. The created structure complies with the shdf format. The MAT files can be further processed with MATLAB and reimported into ArtemiS.
- **OggVorbis**
With adjustable range and fading options

Overview

In addition to the import (Wave, ASCII ATFX, MP3) and export (ASCII, Excel, Wave, ATFX, MP3) options already included in the ArtemiS Basic version, the Advanced Import & Export Module provides several special formats. With ATP 15 all settings relevant for the import of third-party file formats can be adjusted in a clear-structured window. If a format conversion is necessary, ArtemiS performs the required operations in the background.

After the conversion, the imported files are automatically available in the source pool and can immediately be processed with ArtemiS.

The export functions provided by ATP 15 include a control mechanism: by such means, for example, only files containing a time signal can be converted to Wave format. The export function is integrated into the automatic multiple analysis process, which allows the simultaneous export of a large number of files.

- **ME'scope**
It is possible to directly transfer time and analysis data from ArtemiS into the BLK data format of ME'scope. ME'scope does not necessarily have to be installed on the PC.
- **Polytec**
File Access, Version 2.7 or superior must be installed on the computer.