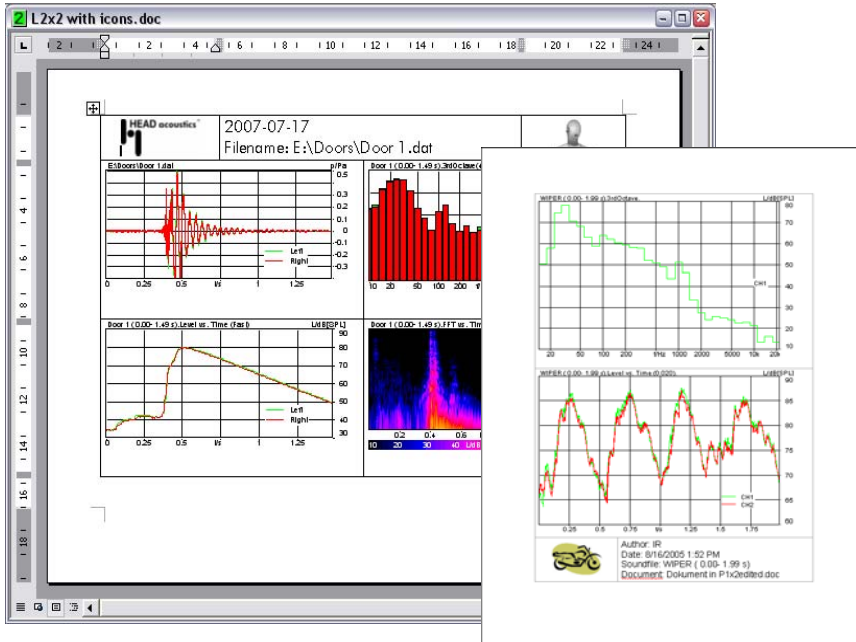


ATP 11 (Code 5022)

ArtemiS Advanced Documentation Module

Individual designed and automatic documentation in Microsoft® Word
 ASM 22 (Code 5022) of the ArtemiS SUITE includes ATP 11.



Overview

The ArtemiS Module for Advanced Documentation automates measurement and work documentation.

The user creates custom report templates manually or using example templates, which are then used for the automated generation of reports.

The automated report generation can be performed for individual signals or for entire folders.

ArtemiS autonomously performs the analysis functions, filtering functions and statistic calculations defined in the template and in the project.

Furthermore ArtemiS autonomously inserts diagrams, images, comments, logos, tables, bitmaps etc. according to the users' specifications.

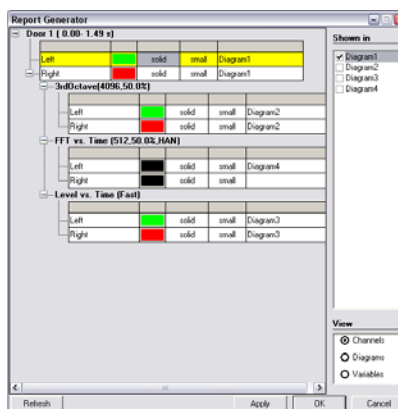
Features

- Automated, custom-designed documentation of measurement files and analysis results using layout templates in Microsoft® Word
- Report generation for individual measurements or entire projects in one step
- Easy creation of custom-designed templates
- Embedding of measurement and analysis diagrams, company logos, graphics, tables, comments, user-defined information or other text and graphic elements
- Automatic calculation of predefined filterings, analysis functions and statistic functions by the templates
- Documentation of results from several measurements combined in a single report

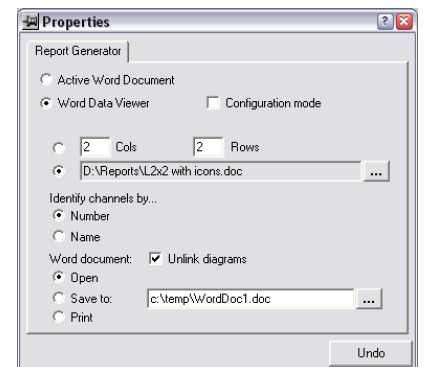
Automated report generation

ATP 11 provides various example templates, which facilitate the creation of custom templates. For the further processing, the usual range of Microsoft® Word functions is available.

At the click of a button, ArtemiS performs all operations defined in the template and in the project – for a single signal or for several signals in succession.



Report generator for the configuration of a Word result window



Properties of the report generator