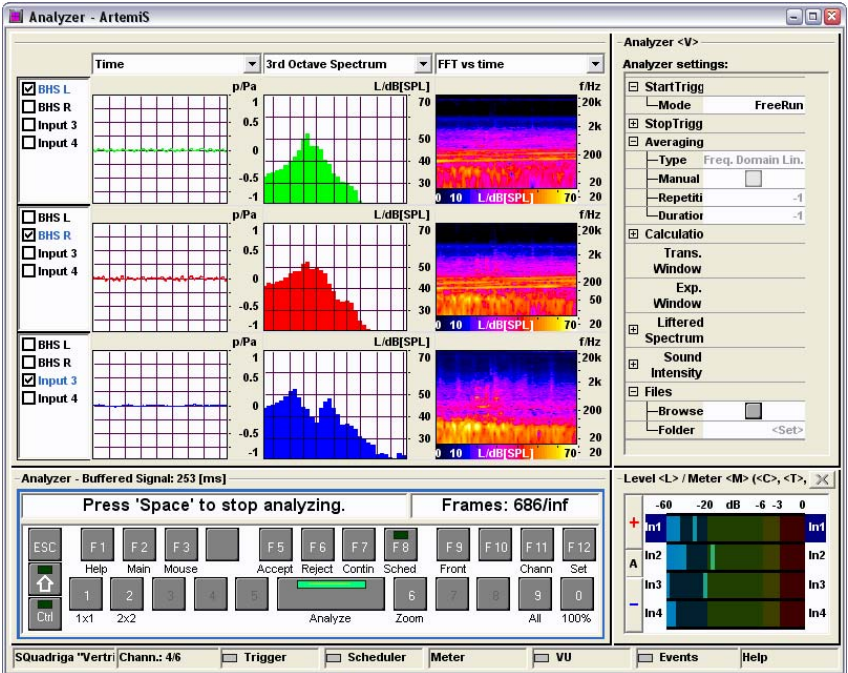


**ATP 08 (Code 5018)**

*Online Analysis Module for ArtemiS*  
 for signal and system analysis in the  
 online mode

ASM 18 (Code 5018) of the ArtemiS SUITE  
 includes ATP 08.



**Overview**

With the Online Analysis Module, ArtemiS provides an innovative tool that combines high performance with ease of use. Diagram windows and the key control elements are integrated in a clearly arranged user interface. All important information is visible at a glance.

You can control all functions with the keyboard and thus use the analyzer under conditions that do not allow using a mouse or entering hotkeys. All channels can be controlled online simultaneously and can be processed with an assortment of analysis methods. The analysis results can be saved and further processed in ArtemiS.

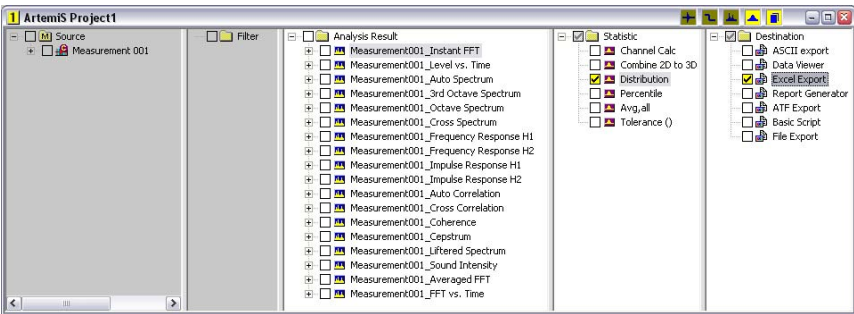
**Features**

- Online-FFT-Analysis
  - Timesignal
  - FFT
  - Auto Spectrum
  - Auto Correlation
  - Cross Spectrum
  - Cross Correlation
  - Frequency Response H1
  - Frequency Response H2
  - Impulse Response H1
  - Impulse Response H2
  - Cepstrum
  - Octave Spectrum
  - 3rd Octave Spectrum
  - Coherence
  - Liftered Spectrum
  - Sound Intensity
- Linear averaging over a user-definable number of measurements
- Exponential averaging with adjustable time constant
- Custom configuration of channels and analysis
- Level meter display
- Listening to data (via selectable monitor frontend) possible during online analysis
- Automatic transfer of analysis results into the analysis pool of ArtemiS

**Applications**

- Intensity display
- Measurement Scheduler for easy management of structural and system analysis
- Real-time analysis in the time and frequency domains
- Mobile online diagnostics, e.g. in a car while driving
- General sound and vibration analysis





- One-hand operation using the keyboard or alternatively operating with hotkeys or mouse
- All diagrams, functions and control elements combined in one clearly arranged user interface
- Various trigger settings

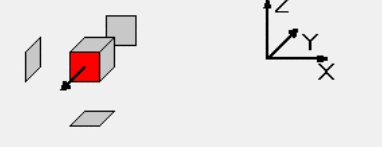


ArtemiS automatically transfers all saved analysis results of ATP 08 into the analysis pool and all time data into the source pool.

### Measurement Scheduler

The Measurement Scheduler facilitates measurements for modal analysis. Location and direction of the sensors are visualized graphically.

		1	2	3
	Brake			
	Reference	<input checked="" type="checkbox"/>	<input type="checkbox"/>	<input type="checkbox"/>
	eRule	fix	Inc. 2	Inc. 2
1	Meas 1	+ 1x	+ 2x	+ 3x
2	Meas 2	+ 1x	- 4y	+ 5x
3	Meas 3	- 1y	+ 6x	+ 7x
4	Meas 4	+ 1x	+ 8x	+ 9x



Measurement Scheduler

### Technical data (Analysis)

#### Trigger

Start Triggermodes: FreeRun / Falling Edge / Rising Edge

#### Averaging

Type: None / Freq. Domain Lin. / Freq. Domain Exp. /  
Time domain Lin. / Max Hold / Min Hold

#### Calculation

FFT Size: 512 - 32768

Overlap: 1 - 99 %

Windows: Exponential / Hanning / Hamming /  
Blackman / Bartlet / Kaiser-Bessel 8 - 16 /  
Flat top / Gauss 8, 16, 32 / Transient /  
Exponential